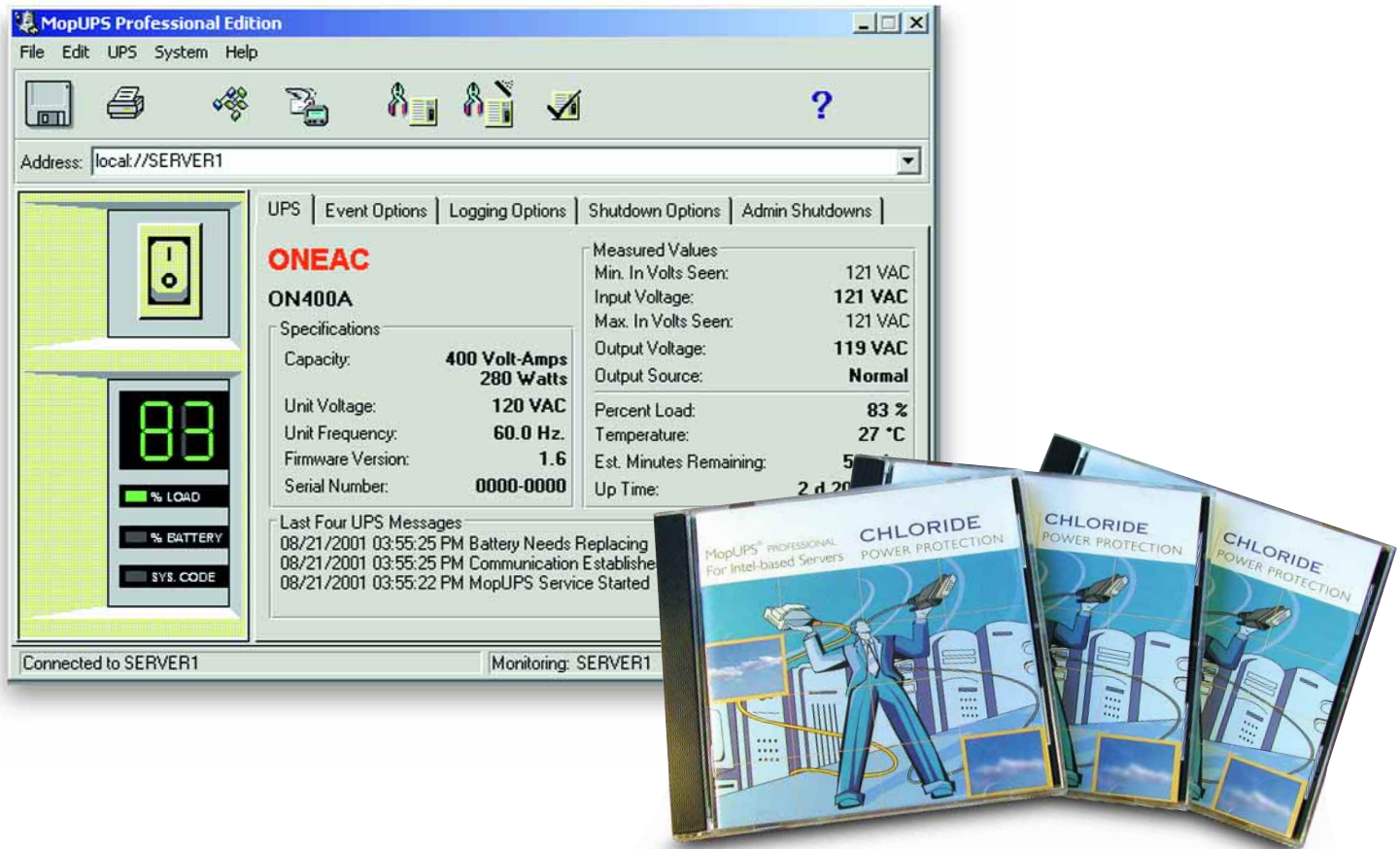


MopUPS® PROFESSIONAL: MopUPS PROFESSIONAL is UPS software for safe system shutdown and useful power management. With advanced features such as network shutdown, scheduled shutdown and restart, event messaging, event logging, data logging, real time viewing, UPS Diagnostics and remote access, MopUPS PROFESSIONAL has everything you need to preserve data and maximize system uptime.

Network Shutdown & Remote Management



Key Features

Safe system shutdown

Preserve data integrity and minimize recovery delays with automated system shutdown. MopUPS monitors the UPS for power fail, low battery or other events that jeopardize computer power and initiates controlled system shutdown.

Safe network shutdown

Multiple computers on a shared power source also need to share power status information to enable safe shutdown of all systems. MopUPS offers several architectures that deliver flexibility, simplicity and reliability in network-based shutdown.

Remote messaging

MopUPS keeps you informed anywhere. Fault and recovery messages are sent via network, email, pager or SNMP trap.

Remote management

Site power and UPS status information can be accessed securely from any computer on your IP-based network. View event history and voltage logs for trend analysis. View UPS system status in real time for situational decision support. Access is based on User Authentication with 128bit, MD5 encryption.

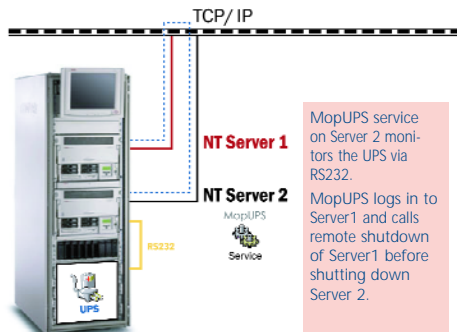
MopUPS PROFESSIONAL: Specifications

Network Shutdown & Remote Management

MopUPS offers three different options for enabling safe, network-based shutdown of multiple computers sharing a common UPS. These options can be used in any combination to provide flexibility and reliability. Remote Management lets you view site power and UPS status information in real time remotely.

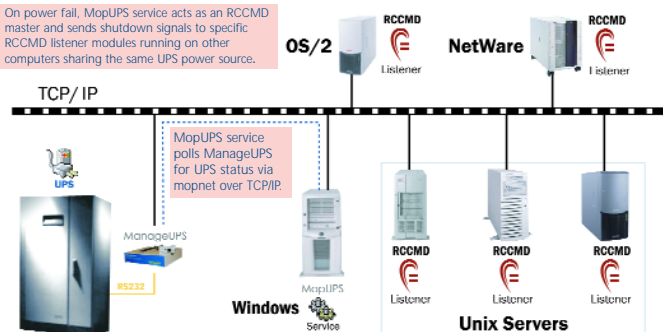
Single Schedule Shutdown:

Windows NT/2000



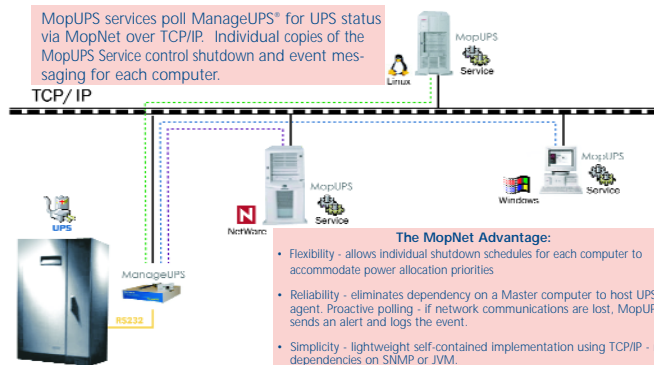
Single Schedule Shutdown via RCCMD:

On power fail, MopUPS service acts as an RCCMD master and sends shutdown signals to specific RCCMD listener modules running on other computers sharing the same UPS power source.



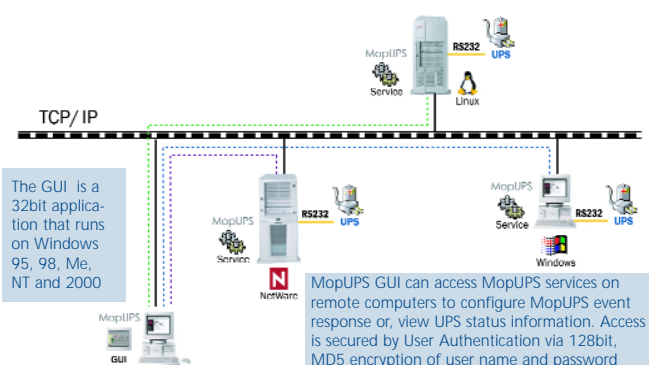
Flexible Schedule Shutdown via MopNet:

MopUPS services poll ManageUPS® for UPS status via MopNet over TCP/IP. Individual copies of the MopUPS Service control shutdown and event messaging for each computer.



Remote Management via TCP/IP:

The GUI is a 32bit application that runs on Windows 95, 98, Me, NT and 2000



System Requirements

- Installation requires user account with Administrator rights.
- Network SMTP server required for email messaging.
- Serial UPS Monitoring requires dedicated computer serial port.
- Network Monitoring requires 10Base-T TCP/IP ethernet connection and ManageUPS®NET adapter.

UPS Compatibility

UPS	Intel-Bsed Part Number	RISC-Based Part Number
ON Series®	SK-PROMOP-O	SK-PROMOPRU-O
Sinergy® Series	SK-PROMOP-O2	SK-PROMOPRU-2
EDP Series	SK-PROMOP-S	SK-PROMOPRU-S

Supported Operating Systems

Intel-Based Systems:

- Windows (95, 98, Me, NT, 2000 and XP)
- NetWare (4.11, 5.x, 6.x)
- Sun Solaris (2.8 and up)
- SCO OpenServer (Release 5.0.5)
- SCO Unix 3.2
- FreeBSD 4.4
- UnixWare (5 and 7)
- Linux (Redhat 6.x, 7.x, 8.x, 9.0, SuSe 7.x, Hancorn 2.x)
- Redhat Enterprise Linux 2.x

RISC-Based Systems:

- Sun Solaris (2.5 and up)
- HP UX (11.0)
- IBM AIX (4.3.3)
- SGI IRIX (6.5)
- SUN OS

Multiple User Site Licenses

Multi-User Site Licenses are available. Please contact ONEAC.

ONEAC, ON Series, ManageUPS, MopUPS and Sinergy are registered trademarks of ONEAC. All other trademarks, product and corporate names are the property of their respective owners.

A CHLORIDE POWER PROTECTION COMPANY

ONEAC is a UL/BSI registered corporation — Certification No. A2900



(800) 327 8801 OPT. 2 in USA AND CANADA

27944 N. Bradley Road, Libertyville, IL 60048 Phone 847 816-6000 FAX 847 680-5124

+44 (0) 2380 610311 in UK AND EUROPE

George Curl Way, Southampton, Hampshire SO18 2RY, UK FAX +44 (0) 2380 612039